

# CATALOGUE

## MEDICAL EQUIPMENT

### Medical Teaching Models



PIE MARIE TRADING CC

[www.piemariechristine.co.za](http://www.piemariechristine.co.za)

[info@piemariechristine.co.za](mailto:info@piemariechristine.co.za)

+27 11 869 2315 / 011 869 2315

110 Paul Kruger, South Crest, Alberton

# Table of contents

1. Human Head Section Models-----	4
2. Plastic Inner Ear Model -----	5
3. Human Digestive System Model -----	7
4. Dual Sex Human Torso Anatomy Model-----	8
5. PVC Medical Teaching Models -----	11
6. Male Female Genital Organ Model -----	13
7. PVC Plastic Soft Gum Teeth Model -----	14
8. Skin Section Embryology Models-----	16
9. Human 3D Lung Model Natural Size -----	17
10. Human Anatomical Heart Model -----	18
11. Cardiopulmonary Resuscitation -----	19
12. Human Eyeball Anatomy Model -----	21
13. Anatomical Spine Model Medical -----	22
14. Anatomical Human Skeleton Model -----	23
15. Dystocia Training Medical Simulator-----	24
16. Arm And Leg Bone Medical Model-----	26
17. Anatomical Human Skull For Studying-----	27
18. Medical Grade PVC Ear Cleaning Syringe -----	29

PMC Trading Medical Supplies primarily targets the need for Medical Equipment and supplies. Our goal is, to be affordable whilst still offering Service Excellence and Quality Products, as it is our desire to assist our Customers and the final end User to the best of our ability. It is our goal to be a solid, reliable and dependable player in the Medical Supplies arena in order to foster healthy relationships with our Customers, hereby encouraging loyalty and longevity for all players concerned.

We have been successful in building a brand of service excellence and quality equipment amongst our clients, and the loyalty of our clients keep us motivated to keep growing and improving our presence and product offering.

We research the most up to date medical innovation in hospital furniture and medical capital equipment, to bring our clients the latest and best solution and long-term investment in their hospital or clinic.

## About PMC Medical Equipment

PCM trading is a proudly South African company focusing on the sales and distribution of Medical Equipment. The business was built on medical expertise, excellent client service and the pursuit of medical- and clinical innovation.

## About PMC Medical Equipment Supplies

In our efforts to achieve this we further endeavor to make our working environment a pleasant. Our team is driven as one unity and can only strengthen PCM Medical Supplies. We have a range of clinical equipment which we supply in around the country. We make all efforts to source additional, quality products and in so doing we do look to source locally wherever possible. If the required product is not available locally, we will import, as is necessary, in order to meet our Customer's needs.



# Human head section models

Human head section medical teaching models ecofriendly allergy free



<b>Place of Origin:</b>	Guangzhou China
<b>Brand Name:</b>	GOLGATHA
<b>Certification:</b>	CE/ISO
<b>Model Number:</b>	GGT – 7022

## Product Description

<b>Condition</b>	New	<b>Customized</b>	Customized
<b>Certification</b>	CE And ISO	<b>Material</b>	PVC
<b>Type</b>	Anatomical Model	<b>Product Name</b>	Head Section Model
<b>High Light:</b>	<b>Anatomical models for medical students, medical models for teaching</b>		

## Medical Head Section Model

### Head section model:

1. Show the detailed characteristics of human head;
2. Packing :5pcs/box,38.5\*35\*25cm,5kg



# Plastic inner ear model

## Human anatomical medical teaching models plastic inner ear model



<b>Place of Origin:</b>	Guangzhou China
<b>Brand Name:</b>	GOLGATHA
<b>Certification:</b>	CE/ISO
<b>Model Number:</b>	GGT – 13011

## Product Description

<b>Customized</b>	Customized	<b>Material</b>	PVC+ABS
<b>Size</b>	32X16X11 Cm	<b>Net Weight</b>	2 Kg
<b>Specification</b>	CE/ ISO	<b>Origin</b>	China Guangdong
<b>High Light:</b>	ENT surgical instruments, ENT examination instruments		

### Medical Anatomical Plastic Inner Ear Model

#### Product Description

Size: 32x16x11 cm

Net weight: 2 kg

Material: PVC+ABS

Printing: Silk screen printing on base

Package: Individual package in white cardboard box

Estimated packing detail:

Shipping	Quantity/outer	Carton dimension	Gross weight
	6pcs	68 x 36 x 49cm cm	13kgs





# Human digestive system model

Recycled medical human digestive system model for teaching life size 6 parts



<b>Place of Origin:</b>	Guangzhou China
<b>Brand Name:</b>	GOLGATHA
<b>Certification:</b>	CE/ISO
<b>Model Number:</b>	GGT – 7019

## Product Description

<b>Condition</b>	New	<b>Customized</b>	Customized
<b>Material</b>	PVC	<b>Origin</b>	China Guangdong
<b>Trademark</b>	Golgotha	<b>Type</b>	Anatomical Model
<b>High Light:</b>	Human body anatomy mode, medical models for teaching		

### Digestive System Model

Digestive System Model

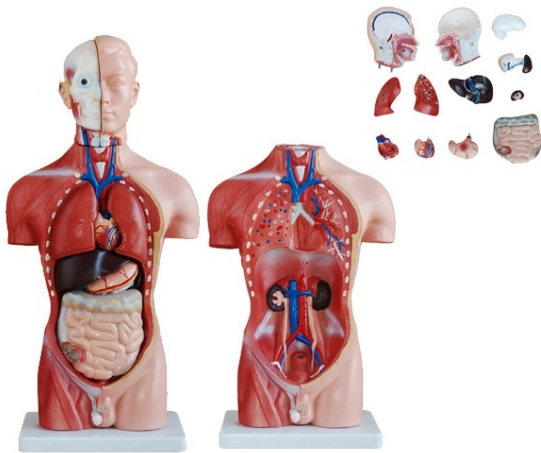
Size: Life size, 6 parts

Material: PVC



# Dual sex human torso anatomy model

Medical dual sex human torso anatomy model with head clear structure



<b>Place of Origin:</b>	Guangzhou China
<b>Brand Name:</b>	GOLGATHA
<b>Certification:</b>	CE/ISO
<b>Model Number:</b>	GGT – 7017

## Product Description

<b>Material</b>	PVC	<b>Trademark</b>	Golgotha
<b>Condition</b>	New	<b>Type</b>	Anatomical Model
<b>Origin</b>	China Guangdong	<b>Specification</b>	CE/ ISO
<b>High Light:</b>	<b>Human body anatomy mode, medical models for teaching</b>		





## **Product Description**

- Can be hand-held with certain characteristics to facilitate teaching.
- Clear structure. We can produce a teaching model of each system according to the teaching needs.
- Vivid model, strong sense of reality.
- Using recycled. It will be saving resources to ensure school teaching
- Long time using. An investment in the long term benefit.
- Maintenance more convenient. Laboratory technician can repair the model according to the instruction of products. Using water to clean the stain on the sample and dry in a cool and wind place.

## **The Following Parts Can Be Removed:**

- Torso
- Thoracic Vertebra
- Head
- Eyeball
- Brain Half Right
- 2 Parts Lung
- 2 Parts Heart
- 2 Parts Stomach
- Liver
- Kidney Half
- 4 Parts Intestine Small and Colon
- 4 Parts Male Genital Organs
- 3 Parts Female Genital Organs
- Natural Size: 37\*23\*90cm

## **Application**

Anatomy model application

The anatomy model can widely use in Human anatomy, medical education, medical research, science propaganda, archeology, anthropology and biology research etc. because the clear structure, and vivid shape. It will make a great congratulations.

1. Medical University class for students learning
2. Hospital show for the patients.
3. Pharmaceutical factory as model to promote their new medicine.

4. Popular with science museum, exhibition hall, clinic etc.

In a word, anatomy model can improve human anatomy learning environment, increase interest in learning, eliminate fear of ordinary specimens, and help to improve the quality of learning. But also avoid the pollution of the environment and physical damage. This study shows it is having an increasingly the greater effect because of introduction of anatomy model.

# PVC medical teaching models

## Advanced PVC medical teaching models nursing patient care manikin full body



<b>Place of Origin:</b>	Guangzhou China
<b>Brand Name:</b>	GOLGATHA
<b>Certification:</b>	CE/ISO
<b>Model Number:</b>	GGT – 7028

## Product Description

<b>Subject</b>	Medical Science	<b>Material</b>	Advanced PVC
<b>Usage</b>	School, Teaching, Medical	<b>Type</b>	Anatomical Model
<b>Warranty</b>	1 Year	<b>Design</b>	Correctly Designed
<b>High Light:</b>	<b>Anatomical models for medical students, human body anatomy mode</b>		



## **Basic Combination Nursing Manikin Patient Care Manikin Medical Teaching Model**

The manikin is designed according to latest nursing curriculum for clinical nursing training. It includes a full-body manikin, can simulate all basic nursing and advanced nursing skills.

### **Brief introduction**

1. Hair and face washing
2. Eye and ear washing and administering
3. Mouth cavity and artificial teeth care
4. Endotracheal intubation
5. Sputum suction
6. Oxygen inhaling
7. Oral and nasal feeding
8. Gastro lavage
9. Main organs in thoracic cavity
10. Breast care and inspection
11. Venipuncture, injection, blood transfusion (Arm)
12. Deltoid subcutaneous injection
13. Vast us laterals injection
14. Thoracic cavity, abdominal cavity, liver, bone marrow and lumbar puncture
15. Enema
16. Female urethral catheterization
17. Male urethral catheterization
18. Female bladder irrigation
19. Male bladder irrigation
20. Ostomy
21. Buttocks intramuscular injection
22. Main organs in abdominal cavity
23. Holistic nursing care: sponge bath, replacing clothes

# Male female genital organ model

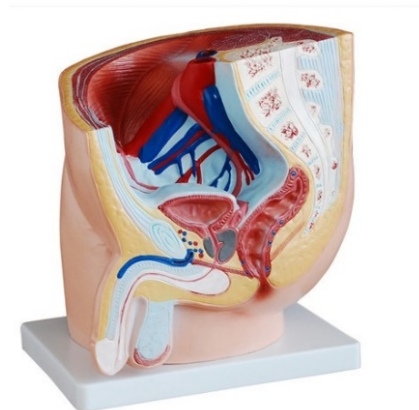
Practice medical teaching models male female genital organ model with base



<b>Place of Origin:</b>	Guangzhou China
<b>Brand Name:</b>	GOLGATHA
<b>Certification:</b>	CE/ISO
<b>Model Number:</b>	GGT – 7027

## Product Description

<b>Trademark</b>	Golgotha	<b>Origin</b>	China Guangdong
<b>Material</b>	PVC	<b>Size</b>	28*24*29cm
<b>Specification</b>	CE/ ISO	<b>Transport Package</b>	Carton
<b>High Light:</b>	<b>Human body anatomy mode, medical models for teaching</b>		



## PVC plastic soft gum teeth model

PVC plastic soft gum teeth model, dental models for teaching CE ISO



<b>Place of Origin:</b>	Guangzhou China
<b>Brand Name:</b>	GOLGATHA
<b>Certification:</b>	CE/ISO
<b>Model Number:</b>	GGT – 7026

### Product Description

<b>Condition</b>	New	<b>Type:</b>	CE And ISO
<b>Application</b>	Pet, Adult, Child, Student	<b>Certification:</b>	Specialized Equipment
<b>Material</b>	PVC	<b>Warranty:</b>	China Guangdong
<b>High Light:</b>	<b>Human body anatomy mode, medical models for teaching</b>		

### Dental Soft Gum Teeth Model

Dental most popular product & new exhibition show item

32pcs teeth, teeth removable

Soft Gum,

Screw fixed,

DP Articulator,

which can be put on the metal stand for Demonstration.

NISSIN 200 Compatible Dental Soft Gum Teeth Model Hysodont w/ 32 Removable Teeth

Compatible with NISSIN 200

Teeth removable & replaceable

100% made of natural resin

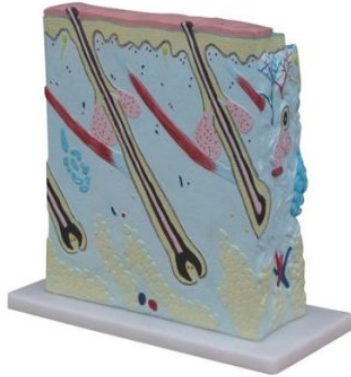


100% free of chemically irritating odor  
100% safe for human.



# Skin section embryology models

Customized handheld skin section embryology models for facilitate teaching

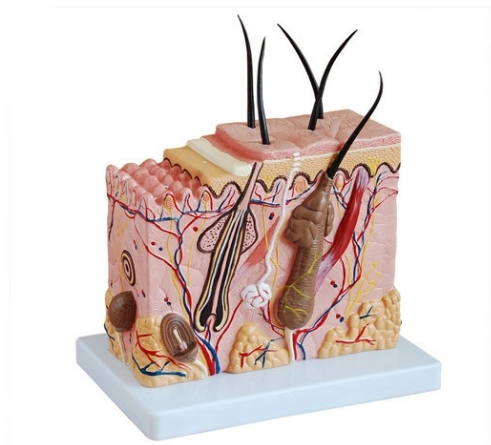


<b>Place of Origin:</b>	Guangzhou China
<b>Brand Name:</b>	GOLGATHA
<b>Certification:</b>	CE/ISO
<b>Model Number:</b>	GGT – 7025

## Product Description

<b>Customized</b>	Customized	<b>Material</b>	PVC
<b>Trademark</b>	Golgotha	<b>Condition</b>	New
<b>Type</b>	Anatomical Model	<b>Origin</b>	China Guangdong
<b>High Light:</b>	<b>Anatomical models for medical students, human body anatomy mode</b>		

- Can be hand-held with certain characteristics to facilitate teaching.
- Clear structure. We can produce a teaching model of each system according to the teaching needs.
- Vivid model, the strong sense of reality.
- Using recycled. It will be saving resources to ensure school teaching
- Long time using. An investment in the long term benefit.
- Maintenance more convenient. Laboratory technician can repair the model according to the instruction of products. Using water to clean the stain on the sample and dry in a cool and wind place.



# Human 3D lung model natural size

Professional medical teaching models human 3D lung model natural size



<b>Place of Origin:</b>	Guangzhou China
<b>Brand Name:</b>	GOLGATHA
<b>Certification:</b>	CE/ISO
<b>Model Number:</b>	GGT – 7024

<b>Condition</b>	New	<b>Certification</b>	CE And ISO
<b>Material</b>	PVC	<b>Type</b>	Anatomical Model
<b>Origin</b>	China Guangdong	<b>Trademark</b>	Golgotha
<b>High Light:</b>	<b>Anatomical models for medical students, human body anatomy mode</b>		

## Natural Size Lung Model

Natural Size Lung Model

size:14\*14\*27.5cm 18pcs/ctn 47\*47\*59cm 15.32/10.62kgs

This Professional Stomach Model is used in Medical Schools educational programs by teachers and students for easy understand and learning Human Also used in doctors' offices and legal presentations.



# Human anatomical heart model

## Plastic human anatomical heart model life size for medical students



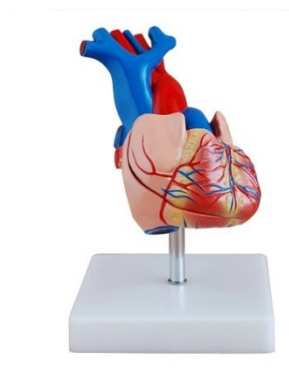
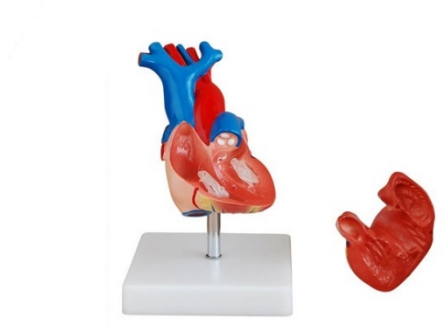
<b>Place of Origin:</b>	Guangzhou China
<b>Brand Name:</b>	GOLGATHA
<b>Certification:</b>	CE/ISO
<b>Model Number:</b>	GGT – 7023

## Product Description

<b>Condition</b>	New	<b>Customized</b>	Customized
<b>Certification</b>	CE And ISO	<b>Material</b>	PVC
<b>Origin</b>	China Guangdong	<b>Trademark</b>	Golgotha
<b>High Light:</b>	<b>Anatomical models for medical students, medical models for teaching</b>		

## Heart model

Life size heart model is hand painted in full color, anatomically correct, and priced well below any heart models of this quality, The heart is dissected into two parts so all internal and external structures functions can be demonstrated and discussed, A durable full color teaching card identifying all of the internal and external major anatomical structures of the heart is included and makes an outstanding teaching aid.



# Human body medical teaching models for

## Human body medical teaching models for cardiopulmonary resuscitation practices



<b>Place of Origin:</b>	Guangzhou China
<b>Brand Name:</b>	GOLGATHA
<b>Certification:</b>	CE/ISO
<b>Model Number:</b>	GGT – 7029

## Product Description

<b>Color</b>	Skin Color	<b>Trademark</b>	Golgotha
<b>Feature</b>	Vivid	<b>Market</b>	Global
<b>Origin</b>	China Guangdong	<b>Material</b>	PVC
<b>High Light:</b>	<b>Human body anatomy mode, medical models for teaching</b>		

The product features a comprehensive upgrade, highlighting the CPR training operation of the shop function, and can set their own values, more in line with clinical and teaching practice CPR operation requirements.

### **Executive Criteria:**

American Heart Association (AHA) 2015 International Cardiopulmonary Resuscitation (CPR) & Cardiovascular Emergency (ECC) Guidelines.

### **Features:**

8-inch color display: analog heart beat display, simulated ECG display, huge chart data statistics, CPR operation animation display, and the use of Chinese characters show. Simulated human anatomical features obvious, feel real, unified skin color, shape realistic, beautiful appearance.

### **Simulated vital signs:**

In the initial state, the simulated pupil is scattered and the carotid artery is no. During the

pressing process, the simulated human carotid artery was pulsating and the beat frequency was consistent with the pressing frequency. After successful rescue, the simulated pupil returned to normal, carotid artery spontaneous beat. The pupil scaling and carotid pulse can be turned on and off by the switch. Can be artificial respiration and extracorporeal compression. Can be standard airway open, airway indicator light. Three modes of operation: can be CPR training, mode assessment and actual assessment.

**Method 1:** CPR training, can be pressed and inflated training.

**Method 2:** mode assessment, in the set time, according to the 2015 International Cardiopulmonary Resuscitation Standard, the correct press and blowing the number of 30: 2 ratio, complete 5 cycles.

**Method 3:** actual assessment, the teacher can set their own operating time range, operating standards, the number of cycles, operating frequency, pressing and blowing ratio.





# Human eyeball anatomy model

Medical 3D anatomical eye model, human eyeball anatomy model



<b>Place of Origin:</b>	Guangzhou China
<b>Brand Name:</b>	GOLGATHA
<b>Certification:</b>	CE/ISO
<b>Model Number:</b>	GGT – 7021

## Product Description

<b>Condition</b>	New	<b>Customized</b>	Customized
<b>Certification</b>	CE And ISO	<b>Material</b>	PVC
<b>Origin</b>	China Guangdong	<b>Specification</b>	15cm*20cm*30cm 5KGS
<b>High Light</b>	<b>Anatomical models for medical students, medical models for teaching</b>		

### Features:

1. The model can be dissected on the longitudinal plane to show internal details.
2. Dissected into six parts, 28 positions are displayed.
3. Size: 6 times enlarged
4. Material: Advanced PVC and paint



# Anatomical spine model medical

Human anatomical spine model medical teaching models for student's life size



<b>Place of Origin:</b>	Guangzhou China
<b>Brand Name:</b>	GOLGATHA
<b>Certification:</b>	CE/ISO
<b>Model Number:</b>	GGT – 7013

## Product Description

<b>Certification</b>	CE And ISO	<b>Material</b>	PVC
<b>Type</b>	Anatomical Model	<b>Condition</b>	New
<b>Origin</b>	China Guangdong	<b>Trademark</b>	Golgotha
<b>High Light:</b>	<b>Anatomical models for medical students, human body anatomy mode</b>		

### Medical Life-Size Spine Model

This model shows all significant features of each vertebra, including spinal cord, nerve roots, the vertebral artery, a heated disc and vertebral notch etc. Special features includes: inflexible 29" tall vertebral column complete with pelvis, sacrum, occipital bone, vertebral artery, all nerve branches and herniated lumbar disc. Deluxe chrome stands 34" high.

Packing: 2PCS/CTN, 80\*32\*39cm, 9kgs



# Anatomical human skeleton model

Life size medical anatomical human skeleton model 97 X 45.5 X 28cm



<b>Place of Origin:</b>	Guangzhou China
<b>Brand Name:</b>	GOLGATHA
<b>Certification:</b>	CE/ISO
<b>Model Number:</b>	GGT – 7011

## Product Description

<b>Material</b>	PVC	<b>Type</b>	Anatomical Model
<b>Specification</b>	97*45.5*28 cm	<b>Origin</b>	China Guangdong
<b>G.W</b>	14 kg	<b>Warranty</b>	3 Years
<b>High Light:</b>	<b>Anatomical models for medical students, medical models for teaching</b>		

### Human Skeleton Model

1. The model shows all the anatomic details of the skeleton structure.
2. Joint and upper, lower extremities is removable.



# Dystocia training medical

Durable medical teaching models dystocia training medical simulator manikin



<b>Place of Origin:</b>	Guangzhou China
<b>Brand Name:</b>	GOLGATHA
<b>Certification:</b>	CE/ISO
<b>Model Number:</b>	GGT – 7030

## Product Description

<b>Subject</b>	Medical Science	<b>Material</b>	PVC
<b>Place Of Origin</b>	Guangdong, China	<b>Type</b>	Manikin
<b>Brand Name</b>	GOLGATHA	<b>Function</b>	Advanced Nursing Training
<b>High Light:</b>	<b>Anatomical models for medical students, medical models for teaching</b>		

## Dystocia Training Medical Simulator

MODEL	1
MATERIAL	PVC
USAGE	School, teaching, medical
PACKING	58x34x44.5cm, 1pcs/carton
PORT	SHANGHAI, CHINA
MADE IN	SHANGHAI, CHINA
CERTIFICATION	ISO
OEM/ODM	Clients' design is welcome
LEAD TIME	14 days upon order confirmation
MOQ	USD3000 per shipment
Payment Terms	T/T, L/C, western union
Manufacturer	Xincheng Scientific Industries Co., Ltd.
PRICE	Reasonable price with high quality

The model can simulate all kinds of abnormal deliveries. Pelvic stenosis can be showed by inflatable air bag and abnormal positioning of fetus demonstrates dystocia.



# Arm and leg bone medical model

Arm and leg bone medical teaching models water resistant lightweight



<b>Place of Origin:</b>	Guangzhou China
<b>Brand Name:</b>	GOLGATHA
<b>Certification:</b>	CE/ISO
<b>Model Number:</b>	GGT – 7015

## Product Description

<b>Specification</b>	CE/ ISO	<b>Condition</b>	New
<b>Material</b>	PVC	<b>Trademark</b>	Golgotha
<b>Origin</b>	China Guangdong	<b>Transport Package</b>	Paper Ctns
<b>High Light</b>	<b>Anatomical models for medical students, medical models for teaching</b>		

### Features:

Size: Life size

Material: Advanced PVC

PACKAGE;	20cm*10cm*15cm
G.W.	2KGS





# Anatomical human skull for studying

Plastic medical teaching models anatomical human skull for studying anatomy



<b>Place of Origin:</b>	Guangzhou China
<b>Brand Name:</b>	GOLGATHA
<b>Certification:</b>	CE/ISO
<b>Model Number:</b>	GGT – 7012

## Product Description

<b>Customized</b>	Customized	<b>Material</b>	General Medical Supplies
<b>Trademark</b>	OEM	<b>Size</b>	Free Samples Are Available
<b>Origin</b>	China Guangdong	<b>Condition</b>	Can Be Customized
<b>High Light</b>	<b>Anatomical models for medical students, human body anatomy mode</b>		

## Medical Anatomical Skull Model

Model number	GGT – 7012		
Size	25 x 20 x 20cm		
Material	PVC		
Package	Individual package in small box		
Estimated packing detail:			
Shipping	Quantity/outer	Carton dimension	Gross weight
	12pcs	53x39x55CM	22kgs



# Human joint model for medical teaching

Human joint model for medical teaching 11cmx4cm corrosion resistance



<b>Place of Origin:</b>	Guangzhou China
<b>Brand Name:</b>	GOLGATHA
<b>Certification:</b>	CE/ISO
<b>Model Number:</b>	GGT – 7014

## Product Description

<b>Material</b>	PVC	<b>Size Of The Model</b>	11cmx4cm
<b>Trademark</b>	Golgotha	<b>Condition</b>	New
<b>Origin</b>	China Guangdong		
<b>High Light:</b>	<b>Human body anatomy mode, medical models for teaching</b>		

## Specifications

Size of the model: 11cmx4cm

Size of the holder: 25cmx18cmx5cm

Material: PVC

Packing: Individually packed in a box



