

# CATALOGUE

## MEDICAL EQUIPMENT

### X Ray Room Equipment



PIE MARIE TRADING CC

[www.piemariechristine.co.za](http://www.piemariechristine.co.za)

[info@piemariechristine.co.za](mailto:info@piemariechristine.co.za)

+27 11 869 2315 / 011 869 2315

110 Paul Kruger, South Crest, Alberton

# Table of contents

1. High Frequency Mobile C Arm X Ray Room Equipment -----	4
2. Fluoroscopy Machine Durable -----	9
3. Stainless Steel X Ray Film Hanger -----	12
4. Medical X Ray Film Dryer -----	13
5. U Shaped Frame Digital Medical X Ray-----	14
6. Darkroom Red Light AC 220V 50Hz -----	18
7. Automatic X Ray Film Processor -----	19
8. Painless Magnetic Resonance Imaging MRI Scan-----	22
9. Digital Mammography Machine Integrating Design-----	24
10. High Sensitivity Medical X Ray Film -----	27
11. Medical X Ray Film Fixer And Developer Chemicals -----	28
12. X Ray Film Processing Machine In Radiography -----	31
13. Gastrointestinal Digital X Ray System -----	33
14. Lab Filled Automatic X Ray Room Equipment-----	35
15. Intraoral X Ray Machine High Performance-----	38
16. MRI Magnetic Resonance Imaging Machine -----	30

PMC Trading Medical Supplies primarily targets the need for Medical Equipment and supplies. Our goal is, to be affordable whilst still offering Service Excellence and Quality Products, as it is our desire to assist our Customers and the final end User to the best of our ability. It is our goal to be a solid, reliable and dependable player in the Medical Supplies arena in order to foster healthy relationships with our Customers, hereby encouraging loyalty and longevity for all players concerned.

We have been successful in building a brand of service excellence and quality equipment amongst our clients, and the loyalty of our clients keep us motivated to keep growing and improving our presence and product offering.

We research the most up to date medical innovation in hospital furniture and medical capital equipment, to bring our clients the latest and best solution and long-term investment in their hospital or clinic.

## About PMC Medical Equipment

PCM trading is a proudly South African company focusing on the sales and distribution of Medical Equipment. The business was built on medical expertise, excellent client service and the pursuit of medical- and clinical innovation.

## About PMC Medical Equipment Supplies

In our efforts to achieve this we further endeavor to make our working environment a pleasant. Our team is driven as one unity and can only strengthen PCM Medical Supplies. We have a range of clinical equipment which we supply in around the country. We make all efforts to source additional, quality products and in so doing we do look to source locally wherever possible. If the required product is not available locally, we will import, as is necessary, in order to meet our Customer's needs.



# High frequency mobile C arm x ray room equipment

High frequency mobile C arm x-ray room equipment for hospital high performance



<b>Place of Origin:</b>	Guangzhou China
<b>Brand Name:</b>	GOLGATHA
<b>Certification:</b>	CE/ISO
<b>Model Number:</b>	GGT – 4022

## Product Description

<b>Form</b>	Mobile	<b>Type</b>	Industrial High-definition X-ray Detector
<b>Customized</b>	Customized	<b>Cbm</b>	3.9cbm
<b>Gw</b>	538kg	<b>Certificate</b>	CE,FDA,ISO
<b>High Light:</b>	<b>Medical x ray machine, portable digital x ray machine</b>		

## Specifications

### 1. Fluoroscopic Capacity

Max rated capacity: Tube Current 4mA, Tube Voltage 120kV  
Automatic Fluoroscopy: Tube Voltage: 40kV~120kV Adjust Automatically  
Tube Current: 0.3mA~4mA Manually Setting  
Manual Fluoroscopy: Continuous Tube Voltage: 40kV~120kV  
Continuous Tube Current: 0.3mA~4mA  
Pulse Fluoroscopy: Continuous Tube Voltage 40kV~120kV  
Continuous Tube Current 4.1mA~30mA  
Pulse frequency: 0.1~25fps, Continuously Adjustable.

### 2. Photography Capacity

Max rated capacity: 5 KW  
Tube Voltage and Current Combination:  
40kV~49kV 1 ~180 mAs

50kV~59kV 1 ~140 mAs

60kV~69kV 1 ~125 mAs

70kV~79kV 1 ~110 mAs

80kV~89kV 1 ~100 mAs

90kV~99kV 1 ~80 mAs

100kV~109kV 1 ~63 mAs

110kV~120kV 1 ~50 mAs

Plate holder Size: 200mm×250mm (8"×10") or 250mm×300mm (10"×12").

### 3. **X-ray Tube**

X-ray Tube Special for High Frequency

Fixed anode Dual-focus: small focus: 0.3 .Large focus: 1.5mm

Inverter Frequency: 40 KHz

Thermal capacity: 35KJ (47HU).

### 4. **Video System**

Image Intensifier: Image Intensifier made by TOSHIBA (9", 6", 4.5")

CCD Video camera : 1.0 mega pixels ultra-low-light CCD camera imported from Japan.

Monitor: High-definition, high-resolution, optional specification.

### 5. **Image Processing System**

(standard) : real-time image collection, specular image , recursive level 0-15 continuously adjustable, last frame frozen, Gamma correction, mass storage, image W/L adjustable, gray-scale conversion, interest district balance, reversal, noise reduction, intensify, smooth, sharpen, compress, enlarge, measurement, label, print and typesetting, Dicom SCP, Dicom SCU, Dicom DIR, Dicom Printing,HIS.

### 6. **Structure**

Directive wheel:  $\pm 90^\circ$ revolution, can freely change the moving direction of the unit.

Ascending & Descending Range of Pillar :  $\geq 400\text{mm}$

C-arm : Forward and Backward Movement: 200mm,

Revolution around Horizontal Axis:  $\pm 180^\circ$

Revolution around Vertical Axis :  $\pm 15^\circ$ , easier to take special positions radiography )

Focus screen distance:1000mm,

C-arm opening :800mm,

C-arm arc depth : 640mm

Slip on orbit :  $120^\circ(+90^\circ \sim -30^\circ)$

PI Usage:

Orthopedics: osteopathy, dialysis, nailing

Surgery: removing foreign body, cardiac catheter, implanting pace maker, interventional therapy, partial radiography, local photography, and other work.

## **II Features**

1. Leading domestic level Mobile Surgical X-ray machine. Real continuously pulse fluoroscopy 25fps. Convenient connection with the Digital subtraction system.
2. One million pixels CCD camera makes the image more distinct.
3. World-class image processing technology software makes the image more distinct to make it more convenient for the doctors in the operation and diagnostic process. Standard DICOM interface makes it convenient to connect with the hospital information system.
4. The pulse fluoroscopy can obtain high -definition image from low dose to meet the requirement of the high-precision and high difficulty micro invasive operation.
5. Low radiation dose used can protect the doctor and patient.
6. Unique double foot brake controller design makes it convenient to control the instrument inside and outside the operation room. This design can also protect the health care professionals by reducing the opportunity to come into contact with the radiation.
7. Exclusive inside and outside monitor design makes it more convenient to observe the operation process either inside or outside the operation room. At the same time, this design can facilitate the outdoor teaching and the real-time observation of the surgical procedures.
8. Uniquely designed basement electric auxiliary supporting arm, ensuring safer use.
9. Specially designed portable controller, facilitating operation.
10. New-pattern frame design with a small and pleasing shape.
11. High-quality combined HF-HV X-ray generator, greatly reducing the X-ray irradiation.
12. The fluoroscopic KV and MA automatic tracking function makes the image brightness and definition shift to the best condition automatically.
13. Toshiba image intensifier is employed, stable and reliable in quality and sound in image definition.
14. Dense X-ray grid is used, further improving the image definition

## **System Performance and Parameter**



Category	Project	Content
Electrical Performance	Photography Capacity	5.0KW
	Automatic Fluoroscopy	Tube Voltage:40kV~120kV adjust automatically Tube Current:0.3mA~4mA adjust automatically
	Manual Fluoroscopy	Tube Voltage:40kV~120kV Continuous Tube Current:0.3mA~4mA Continuous
	Pulse Fluoroscopy	Tube Voltage:40kV~120kV Continuous Tube Current:4.1mA~30mA Continuous Pulse frequency: continuously, adjustable
	Photography Tube Voltage and mA	40 kV~120 kV 20-100mA
	Plate holder Size	200mm×250mm(8"×10")or 250mm×300mm(10"×12")
Video System	X-ray Tube Special for High Frequency	Fixed anode Dual-focus, small focus: 0.3, Inverter Frequency: 40KHz
	Image Intensifier	Image Intensifier made by TOSHIBA (9")
	CCD Video camera	One million pixels ultra-low-light CCD camera
	Monitor	High-definition, high-resolution, optional specification
	System: (standard)	Real-time image collection, specular image , recursive level 0-15 continuously adjustable, last frame frozen, Gamma correction, mass storage, image W/L adjustable, gray-scale conversion, interest district balance, reversal, noise reduction, intensify, smooth, sharpen, compress, enlarge, measurement, label, print and typesetting, Dicom SCP, Dicom SCU, Dicom DIR, Dicom Printing Structure
Structural performance	Directive wheel	±90°revolution, can freely change the moving direction of the unit.
	Ascending & Descend	≥400mm
	C-arm	Forward and Backward Movement: 200mm Revolution around Horizontal Axis: ±180° Revolution around Vertical Axis : ±15° Focus screen distance:1000mm C-arm opening: 800mm C-arm arc depth: 640mm Slip on orbit: 120°(+90°~ -30°)





# Fluoroscopy machine durable

## Noninvasive kidney stone treatment instrument shock wave lithotripsy machine



<b>Place of Origin:</b>	Guangzhou China
<b>Brand Name:</b>	GOLGATHA
<b>Certification:</b>	CE/ISO
<b>Model Number:</b>	GGT – 4028

## Product Description

<b>Title</b>	Kidney Stone Treatment Instrument	<b>Warranty</b>	1 Year
<b>Certificate</b>	CE ISO	<b>Export Markets</b>	Global
<b>Place Of Origin</b>	Guangdong, China	<b>Color</b>	Picture
<b>High Light</b>	Medical x-ray machine, portable digital x-ray machine		

Extracorporeal shock wave lithotripter (ESWL) is a non-invasive treatment device of kidney stones (urinary calculus) using an acoustic pulse (extracorporeal shock wave) to break a large stone into smaller pieces that can pass

### The New Generation Lithotripter

- Brand New Shall Design.
- More Visualize Therapy Way.
- Optimal Electromagnetic Shockwave Generator.
- More User-friendly Localization Logistic.

## **Overhead type Arm Control**

- The reflector and localization system work together with the novel arm, Doctor can adjust the arm to check the patient, just like check the patient by himself.
- Unlike the traditional way of keyboard control, the overhead type arm control method is more intuitive.

## **Multi-angle, Omni directional No blind zone Treatment**

- The generator can move up and down, back and forth, rotate and swing.
- The treatment bed can also move up and down, left and right, No dead corner, No blind zone. Digital Tracking Fast Localization System (Patent of our proprietary intellectual property rights).
- The fast localization system with ultrasound is small and convenient.
- The shockwave generator move along the focal point, while the digital measuring system keeps tracking the calculus.
- The ultrasound probe moves together with the localization system. The doctor can watch the treatment status simultaneously on the ultrasound monitor and decide whether to adjust the focal point at any time, thus realizing high hit rate and high work efficiency.
- Unlike traditional and fussy manual handle localization system, our digital tracking fast localization system is swift and easy.

## **Shockwave Generator Guarantee System**

- Shock wave auto vacuum-pumping system ensures the high efficiency of the shockwave energy.
- Auto circulating water cooling system and generator auto air exhausting system ensure the long service life of shockwave generator.
- Diaphragm rupture auto alarm system minimizes the cost of consumption part.

Reflector	Focal point to reflector center $\geq 130\text{mm}$
Focal point	X axis: $\leq \pm 7\text{mm}$ Y axis: $\leq \pm 80\text{mm}$
Shock wave	Electromagnetic Pulse width: $1\mu\text{S}$ Wave front: $0.5\mu\text{S}$
Operating voltage	14-18KV
He travel range of the therapy bed	Back and forth: $\geq 240\text{mm}$ Right and left: $\geq 240\text{mm}$ Up and down: $\geq 240\text{mm}$
The motion of therapy head	Parallel: $\geq 90\text{mm}$ Rotating angel $\geq 60^\circ$ and $\geq 36^\circ$ on different line
Integrative Main Frame and Drawer style Control	
Electrical source	220V



# Stainless steel x ray film hanger

Dental x ray room equipment accessories stainless steel x ray film hanger



<b>Place of Origin:</b>	Guangzhou China
<b>Brand Name:</b>	GOLGATHA
<b>Certification:</b>	CE/ISO
<b>Model Number:</b>	GGT – 4031

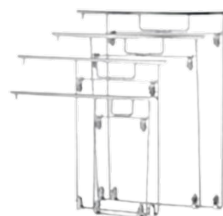
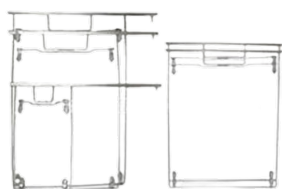
## Product Description

<b>Classification</b>	X-ray Accessories	<b>Type</b>	X Ray Equipment
<b>Material</b>	Metal, 304 Stainless Steel	<b>Specification</b>	CE/ ISO
<b>Trademark</b>	Golgotha	<b>Origin</b>	China Guangdong
<b>High Light</b>	Medical x ray machine, hospital x ray machine		

**Material:** Stainless steel

**Sizes:**

203× 254MM 8× 10inches 18× 24CM  
254× 305MM 10× 12inches 20× 40CM  
280× 356MM 11× 14inches 24× 30CM  
305× 381MM 12× 15inches 30× 35CM  
356× 356MM 14× 14inches 30× 40CM  
356× 432MM 14× 17inches 40× 40CM  
15× 40CM



# Medical x ray film dryer

Automatic x ray film processor, medical x ray film dryer for radiology department



<b>Place of Origin:</b>	Guangzhou China
<b>Brand Name:</b>	GOLGATHA
<b>Certification:</b>	CE/ISO
<b>Model Number:</b>	GGT – 4030

## Product Description

### Application Range

This product is used to dry x-ray films quickly in radiology department.

### Structural Features

1. Vertical structure. Big shockproof Plexiglas's observation window on the top.
2. Eighteen films can be dried simultaneously by the intelligent programmed controller.

The X-ray drying cabinet is suitable for the units such as the hospital and the institution of higher education.

The X-ray film thermostatic drying cabinet is suitable for the units such as the hospital and the institution of higher education to dry the X-ray films. Equipped with digital-displayed thermostat and timer, this machine can be easily to set the temperature and time according to the requirements. With casters under it, the chamber is easy to be moved. It is ideal equipment for drying films.

# U shaped frame digital medical x ray

## U shaped frame digital medical x ray equipment high frequency floor mounted



<b>Place of Origin:</b>	Guangzhou China
<b>Brand Name:</b>	GOLGATHA
<b>Certification:</b>	CE/ISO
<b>Model Number:</b>	GGT – 4014

## Product Description

<b>Properties</b>	Medical X-ray Equipment's & Accessories	<b>Tube Voltage</b>	40-130kV
<b>Type Of Detector</b>	CCD	<b>Power Output</b>	26KW
<b>Tube Current</b>	200mA	<b>Inverter Frequency</b>	60kHz
<b>High Light</b>	<b>Hospital x ray machine, portable digital x ray machine</b>		

### U-arm Digital X-ray Machine

This machine is applied to take radiography on every part of human body, such as head, limbs, chest, limbus and abdomen and etc.

	<b>Item</b>	<b>Parameter</b>
High Frequency X-ray Generator	Power Output	26KW
	Inverter Frequency.	60kHz
	Tube Voltage.	40-130kV
	Tube Current mAs	200mA 0.4~360mAs

	Dual-focus Thermal capacity Speed of rotary anode	Small focus: 0.6 Large focus: 1.3 900kJ (1200 KHU)  3000rpm
Digital Detector	Type of detector Field of view  Inch Pixel  Spatial resolution  Pixel size  Grayscale output  Imaging time	CCD 17"*17"  3K*3K  ≥3.6LP/mm  140um  14bit  15S
Digital workstation	Image acquisition system : Image processing module:  Image storage and transmission:	Photo processing software, X-ray synchro Control software, motion control software. Tissue equilibrium, W/L adjustment, Gamma correction, interest district, reversed phase, noise reduction, smooth, sharpen, pseudo color, Edge extraction, shadow compensation, filter nuclear, single window, dual-window, four windows, movement, right rotated 90°,left rotated 90°,level mirror image, vertical mirror image, magnifying glass, image zooming, reset, layer information, label character, drawing label,



		length measurement, angle measurement, rectangular length, rectangular area, elliptic length, elliptic area. Dicom transmission  Dicom Worksite SCU  Film printing  Mass storage(hard disk, compact disk)
Mechanical structure performance	Motorized vertical travel Anode to Screen range  Rotation range	450mm-1700mm(motorized control) 1000mm-1800mm(motorized control)  -40°~+130°(motorized control)
Others	Supply power	380V 50Hz (220V 50HZ is also available)

1. The electric lift and rotatable newly designed U-shaped frame can meet the photographic requirements of different standing and lying positions. The U-shaped design can make the operation much more convenient and flexible.
2. The world leading 17 million and 9.8 million pixels digital CCD detector can help you get the high-definition images.
3. The leading domestic high power compact high frequency X-ray generator and high frequency power inverter makes the machine much more compact and more convenient without the extra high-voltage generator and cable.
4. Newly designed photographic bed used specially for the U-shaped arm X-ray machine. The bed floating and electromagnetic lock design makes it convenient for the accurate position of the lying patient.
5. Specially designed working station for DR adopts all-digital intelligent touchable LCD control system which is graphic and real color. This system makes the operation easier and more convenient.

6. Apply different photographic parameters according to the human characteristics, such as multi-site, multi-position, multi-body shape, adult and children etc. The parameters can be modified and stored at will and make the operation more convenient.
7. The high quality high frequency high-voltage X-ray generator and high frequency power inverter can produce high-definition and good contrast images by high quality radiation and low dose.
8. The application of the KV and MA digital closed-loop control technology and the real time control of the microprocessor ensure the accuracy and repeatability of the dose.
9. The multiple automatic protection features and fault tips ensure safety during the operation process.
10. Support Dicom 3.0.
11. High quality battery is available for the power supply. Normally, about 200 exposure is available after the battery is fully charged. The image quality is stable and reliable without the effect of the net power.

No.	Item	Quantity
1	Newly designed U-arm frame	1
2	High frequency and high voltage Combined X-ray generator	1
3	High frequency inverted power supply electronic cabinet	1
4	Remote control	1
5	17"*17" digital detector	1
6	19" High-definition LCD display	1
7	Digital workstation	1
8	Hand controller	1
9	Grid	1



# Darkroom red light AC 220V 50Hz

Hospital single color x ray darkroom safelight, darkroom red light AC 220V 50Hz



<b>Place of Origin:</b>	Guangzhou China
<b>Brand Name:</b>	GOLGATHA
<b>Certification:</b>	CE/ISO
<b>Model Number:</b>	GGT – 4015

## Product Description

<b>Power Supply</b>	AC 220V 50Hz	<b>Name</b>	Clamp
<b>Lamp house Power</b>	10W15W	<b>Trademark</b>	Golgatha
<b>Origin</b>	China Guangdong	<b>Transport Package</b>	Wooden Case
<b>High Light:</b>	<b>Hospital x ray machine, portable digital x ray machine</b>		

### Detailed Product Description

Darkroom light is used for the illumination of the magnification, copy, development and process of the films in the darkroom.

Darkroom light Medical X ray darkroom lamp is composed of organic sheet glass, bulb, shell, power supply switch.

The lamps and lanterns of the darkroom are the fixed ordinary ones.

The power supply is AC 220V 50Hz and the lamphouse power is 10W15W.

It is mainly used for the illumination of the magnification, copy, development and process of the films in the darkroom.

It is suitable for the illumination in the X-ray darkroom of the medical institutions.

# Automatic x ray film processor

Automatic x ray film processor x ray room equipment easy operation for medical



<b>Place of Origin:</b>	Guangzhou China
<b>Brand Name:</b>	GOLGATHA
<b>Certification:</b>	CE/ISO
<b>Model Number:</b>	GGT – 4026

## Product Description

<b>Ambient Humidity</b>	Less Than 60%	<b>Power Of The Whole Machine</b>	Less Than 2kw
<b>Process Time</b>	105/135/165s	<b>Develop Time</b>	25/35/45s
<b>High Light:</b>	<b>Hospital x ray machine</b>		

## Features of automatic X ray film processor

- Exclusively in used in medical and lab filed, be suited for all standard file with brand of 35 cm.
- Applied outlook design, load fleet design to adjusted and maintain conveniently.
- Run time set in 135 S, directly wash glandular film animal film lab and print film.
- Excellent micro-compute red flite can simple set warm and speed of wash machine.
- Maintain conveniently send accuracy axis protect film for daily clear.
- Particular combination of axis and fresh dry shot design protection to hot wind dry film.
- Protect-oxygen function, effectively protect drug liquid from be old, producing high clear image.



# Painless magnetic resonance imaging MRI scan

## Painless magnetic resonance imaging MRI scan equipment full body scanning



<b>Place of Origin:</b>	Guangzhou China
<b>Brand Name:</b>	GOLGATHA
<b>Certification:</b>	CE/ISO
<b>Model Number:</b>	GGT -4002

<b>Max. Image Matrix</b>	1024*1024	<b>Field Strength</b>	0.35T
<b>Transmitter Amplifier Peak Power</b>	6kW	<b>Homogeneity(40cm, DSV, VRMS)</b>	≤2.5ppm
<b>Max. Patient Weight</b>	200Kg	<b>5 Gauss Fringe Field</b>	2.5m*2.5m*2.5m
<b>High Light:</b>	<b>Medical x ray machine, hospital x ray machine</b>		

## Product Description

### Medical Magnetic Resonance Imaging MRI Scan Equipment Manufacturer 0.35T MRI Machine Scanner

GOLGATHA Medical launched GGT-MRI-0.35T permanent MRI system in the year 2004, since then GOLGATHA MEDICAL attracted many high-tech talents researched and developed this MRI product with our self-independent intellectual property. GGT-MRI-0.35T combined many pioneering MRI imaging technology and human based humanized design concept, make it achieving high. GGT-MRI-0.35T lead a technical revolution in the permanent MRI field.

GGT-MRI-0.35T permanent MRI system, not only had accumulated the products' technical essence from major companies home and abroad, but also followed the developing trend, and with constant innovation, breakthrough in the industry field and achieved:

### **I Eddy zero technology**

Make sure the imaging quality achieved qualitative improve.

The shimming algorithm technology (ensure field strength with high uniformity and stability), ensure the MRI system operating stably with high quality and high performance.

The high magnetic uniformity, high stability, fast and accurate position operation are always the hard breakthrough technical bottleneck. GGT-MRI-0.35T permanent MRI system not only breakthrough the bottleneck historically, and achieved the "high stability, high performance, high imaging quality and high efficiency". And with the special designed high power gradient magnet field for MC-MRI-0.35T, it achieved as an all-new concept permanent MRI system.

### **I Much open and comfort**

More patient comfort and more space for surgery. Affinity C-shape magnets, creating a maximum of openness, offer a maximum vision for patients, especially leave much space comfort for obese patients, minimizing claustrophobia of patients and providing more space for MR intervention surgery.

### **I Very good gradient system**

Gradient system helps to provide higher resolution pictures, GGT-MRI-0.35T gradient system (X,Y,Z) gradient intensity is 25mT/m. Higher the gradient intensity, faster imaging speed, shorter of scanning time; Higher the gradient intensity, thinner of imaging slice, higher of image resolution.

### **I The new technology**

4D shimming:

Use of advanced active shimming algorithm for real-time automatic shimming on each examination to ensure the magnetic field always maintain the highest uniformity. Magnetic field homogeneity and stability of the MRI images always are the most important guarantee of the high-resolution, high SNR and high contrast. They are the important indicators of the level of magnet design, the better the smaller the value, directly determines the SNR of the image, like a car chassis, stability is essential, the magnetic field uniformity is maintained at <2.5ppm in 40cm the DSV Vrms, the system can complete a wide range of scanning (40cm).

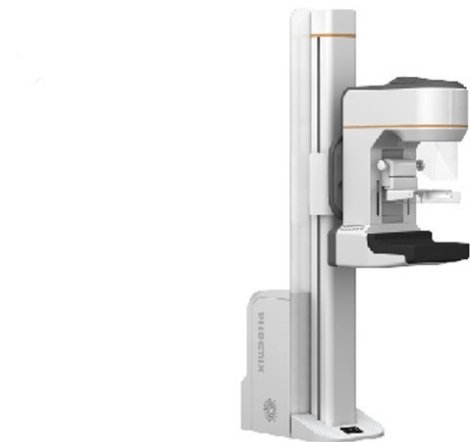


### **Eddy Zero Technology:**

- a) Magnet design uses breakthrough anti-eddy current technology.
- b) The gradient coil using self-shielded active anti- eddy current technology.
- c) Implementation of precision eddy current compensation algorithm, completely eliminate the impact of eddy current. The eddy current because of the high gradient and high slew rate come from ultra-fast sequence was resolved completely, which guarantee to get the best clinic image.

# Digital mammography machine integrating design

## Touch screen x ray room equipment digital mammography machine integrating design



<b>Place of Origin:</b>	Guangzhou China
<b>Brand Name:</b>	GOLGATHA
<b>Certification:</b>	CE/ISO
<b>Model Number:</b>	GGT – 4023

<b>Cassette Image Receptor</b>	18×24cm	<b>Focal Spot</b>	Dual Focus 0.2 / 0.4mm
<b>Specification</b>	Rotated Anode	<b>Power Rating</b>	6kw
<b>Focal</b>	Small Focal Point 20-35kv/10-100mas	<b>Origin</b>	China Guangdong
<b>High Light:</b>	<b>Medical x ray machine, portable digital x ray machine</b>		

### Mammography System

Mammography system is integrating designed, with beautiful appearance, manual operation, convenient operation and use; Use the most popular keyboard, Optical mouse operation.

### Main Features

1. New Molding shell.
2. Three large full color LCD involved.
3. Touch Screen.
4. Electric is centric rotating U-arm with a unique automatic back to center function.
5. Optional flexible compression systems.
6. Optional electric filter.
7. Optional digital imaging function: CR or DR

8. Original mammary texture examination function.
9. Optional import all-Solid transducer AEC

### Function

1. Detect galactoceles accurately.
2. Detect intraductal papilloma.
3. Detect mammary duct ectasia and acute mastitis.
4. Detect proliferation of mammary gland and breast cancer.

### Technical Data

Power Rating	6kW
Focal	Large Focal Point 20-38kV/10-510mAs; Small Focal Point 20-35kV/10-100mAs
X-ray Tube	IAE C339V
Focal Spot	Dual Focus 0.1 / 0.3mm
Cassette Image Receptor	18×24cm Bucky drive mechanism; Grid Ratio: 5:1, 30 Line/cm
Weight	300Kgs
CBM	1.68 m <sup>3</sup>
Radiographic Stand	C-ARM: Vertical Movement:580mm; Rotations Degree:+175°~-180°; SID: 650mm
Anode	Rotated

### X-ray Generator

Generator Type: High Frequency Inverter 40kHz

Input Power: Single phase 220VAC, 50/60Hz

Radiographic Ratings: Large Focal Point 20-35kV/10-510mAs

Small Focal Point 20-35kV/10-100mAs

Power Rating: 3.6kW

### X-ray Tube

Model: IAE C339V

Focal Spot Size: Dual Focus 0.1 / 0.3mm

Target Material: Molybdenum (Mo)

Port Material: Beryllium (Be)

Anode Heat Storage: 300kHU

Anode Cooling: Air cooling  
Filtration: Mo(0.03mm),Al(0.5mm).

### **Radiographic Stand**

C-ARM: Vertical Movement: 580mm  
Rotations Deg: +175°~-180°  
SID: 650mm

### **Cassette Image Receptor**

Bucky Device: 18×24cm Bucky drive mechanism  
Grid Ratio: 5:1, 30 Line/cm

### **Line Voltage**

220Vac@25A,Single phase

### **Weight**

240kg



# High sensitivity medical x ray film

High sensitivity medical x ray film x ray room equipment accessories all size



<b>Place of Origin:</b>	Guangzhou China
<b>Brand Name:</b>	GOLGATHA
<b>Certification:</b>	CE/ISO
<b>Model Number:</b>	GGT – 4019

## Product Description

<b>Medical Device</b>	Type 1	<b>Type</b>	GOLGATHA
<b>Regulatory Type</b>			
<b>Quality Guarantee</b>	Two Years	<b>Origin</b>	Guangdong, China
<b>Period</b>			
<b>Size</b>	All Available	<b>Trademark</b>	Can Be Customized
<b>High Light:</b>	<b>Hospital x ray machine, portable digital x ray machine</b>		

### Features:

- 1) Application: High-speed rare-earth sensitization-developing screens and calcium tungsten acid sensitization-developing screens.
- 2) High sensitivity under low exposure, specific curve copes with all sensitization conditions.
- 3) Low density soft tissue can be clearly seen, such as lungs, retro cardiac mediastinum, transverse diaphragm and spinal marrow, the slightest blood vessels can be pictured clearly.
- 4) Can be developed at rapid speed and high temperatures, or manually

### Specifications:

- 1) 5" X 7" X 100s / 50s, 8" X 10" X 100s / 50s, 10" X 12" X 100s / 50s, 11" X 14" X 100s / 50s, 12" X 15" X 100s / 50s, 14" X 14" X 100s / 50s, 14" X 17" X 100s / 50s.
- 2) Special specifications can be cut according to customers' requirements.



# Medical x ray film fixer and developer chemicals

High sensitivity medical X ray film room equipment accessories all size



<b>Place of Origin:</b>	Guangzhou China
<b>Brand Name:</b>	GOLGATHA
<b>Certification:</b>	CE/ISO
<b>Model Number:</b>	GGT – 4016

## Product Description

<b>Properties</b>	Medical Materials & Accessories	<b>Kind</b>	Metal
<b>State</b>	Liquid	<b>Type</b>	Silver
<b>Temperature</b>	20-35°C	<b>Replenishment</b>	Packing Depend On Client Request
<b>High Light:</b>	Medical x ray machine, hospital x ray machine		

### Brief description

- Suitable for all automatic developing machine and manual developing for various medical films in market.
- Features in good inoxidizability, durable, and big medical films developing quantity.
- Good developing effect with low fog, low granularity, high sensitivity and high resolution ratio.
- Imaging contrast value can be controlled by adjusting the temperature of the chemicals.
- Purified formula makes easier to develop good quality photos and increase the diagnostic accuracy.



Type	Description	Dosing
GGT-101	Developer Fixer	2*20L 2*20L
GGT-102	Developer Fixer	1*20L 1*20L

### Safe Handling procedure

- Keep it out of reach of children.
- While handling the chemicals, please wear safety clothing including protective gloves, PDS goggles and face protective guard.
- Make sure the correct proportioning of A.B.C liquor and water while need 10L or less operating fluid.
- Be carefully and avoid any confusing use of developer and fixer.

### Concentrated liquid

- Expire date is 24 months for all concentrated liquid, but please make sure the packing is original sealed and the temperature should be controlled between 13°C~~18°C.

### Operating fluid and replenishing fluid

- The fluid in the flushing tank should be replaced per week, or else will reduce the utility of fluid. Any replenished should be used up within 2 weeks, so please control the dispensing dosage. Please tighten the bottle cap when not in use to prevent the fluid is polluted, oxidized and steamed.

Type of Product	Temperature	Replenishment
Developer	30°C—35°C	400ML / Sqm
Fixer	20°C—30°C	400ML / Sqm



# X ray film processing machine in radiography

## Automatic constant temperature x ray film processing machine in radiography



<b>Place of Origin:</b>	Guangzhou China
<b>Brand Name:</b>	GOLGATHA
<b>Certification:</b>	CE/ISO
<b>Model Number:</b>	GGT – 4029

## Product Description

<b>Weight</b>	20Kg	<b>Power Supply</b>	AC220±22V 50±1HZ/5A Single Phase
<b>Environment Humidity</b>	≤80%	<b>Environment Temperature</b>	10~35 °C
<b>Agent Temperature</b>	20~34 °C	<b>Groove Capacity</b>	20L
<b>High Light:</b>	<b>Medical x ray machine, portable digital x ray machine</b>		

<b>PRODUCTS INTRODUCTION</b>	<ol style="list-style-type: none"><li>1) Integration of developing water washing fixing water washing, with small land occupation and convenient operation.</li><li>2) Automatic temperature regulation and maintenance.</li><li>3) Automatic water overflow.</li><li>4) The developing agent and water are equipped with automatic valve drainage.</li><li>5) The drainage of fixing agent is controlled by switch and is pumped automatically into the collector barrel, which completely resolves user's difficulty for agent replacement</li></ol>
------------------------------	--

	<b>Technical Parameters</b>	
	Agent temperature	20~34 °C
	Environment temperature	10~35 °C
	Groove capacity	20L
	Environment humidity	≤80%
	Water washing type	Running water
	Power supply	AC220±22V 50±1HZ/5A single phase
	Volume (inclusive of frame) (LWH)	500400750
	Weight	20Kg



# Gastrointestinal digital x ray system

50kw high frequency x ray room equipment, gastrointestinal digital x ray system



<b>Place of Origin:</b>	Guangzhou China
<b>Brand Name:</b>	GOLGATHA
<b>Certification:</b>	CE/ISO
<b>Model Number:</b>	GGT – 4025

## Product Description

<b>Properties</b>	Medical X-ray Equipment's & Accessories	<b>CCD Camera</b>	0.4million Pixel/ 1 Million Pixel
<b>Image Intensifier</b>	9" Toshiba	<b>Warranty</b>	12 Months(at Least)
<b>Monitor</b>	CE ISO	<b>Frequency</b>	High Frequency/200kHz
<b>High Light</b>	<b>ENT medical devices, ENT examination instruments</b>		

### High Frequency Gastrointestinal X-ray System

1. High frequency digital x ray system.
2. R&F double functions.
3. CPI generator & Toshiba x ray tube.
4. DSA function option

### Brief description

1. Adopting 50kw high frequency technology, output constant high voltage direct current, low ripple factor, clearer and sharper image.
2. Automatic Program Radiography (APR), providing thousands of type of radiographic conditions, can set and save radiographic conditions for the especial requirements.
3. Short time exposure, easy to acquire the instantaneous images. Providing image of superior image quality, the accuracy of radiographic diagnosis is improved.



## Lab filed automatic x ray room equipment

### Lab filed automatic x ray room equipment, x ray film processing machine



<b>Place of Origin:</b>	Guangzhou China
<b>Brand Name:</b>	GOLGATHA
<b>Certification:</b>	CE/ISO
<b>Model Number:</b>	GGT – 4003

## Product Description

<b>Voltage</b>	220V±10%,50/60Hz,8.8A single-phase	<b>Ambient Temperature</b>	5~25
<b>Ambient Humidity</b>	Less Than 60%	<b>Power Of The Whole Machine</b>	Less Than 2kw
<b>Process Time</b>	105/135/165s	<b>Develop Time</b>	25/35/45s
<b>High Light:</b>	<b>Medical x ray machine, hospital x ray machine</b>		

### Features of automatic x ray film processor

- Exclusively in used in medical and lab filed, be suited for all standard file with brand of 35 cm.
- Applied outlook design, load fleet design to adjusted and maintain conveniently.
- Run time set in 135 S, directly wash glandular film animal film lab and print film.
- Excellent micro-computered flate can simple set warm and speed of wash machine.

- Maintain conveniently send accuracy axis protect film for daily clear.
- Particular combination of axis and fresh dry shot design protection to hot wind dry film.
- Protect-oxygen function, effectively protect drug liquid from be old, producing high clear image.
- High economic profit: function of waiting for machine can lower consumption of water and electronic, both save drug liquid and improve image.
- Operate simple and excellent safe, simple and upstand, sound and video repair put the next film, protect oxide and loop drug liquid, automatic adjust of display warm ,optional the following different run time meet particular requirement:105s,135s,165s.
- Excellent, simple and personal design, the used can get pleasure high quality and clear image film.

### **Operation Conditions of the 5.2L Medical Automatic X-ray Film Processor**

Voltage	220V±10%,50/60Hz,8.8A single-phase
Ambient temperature	5~25
Ambient humidity	less than 60%
Power of the whole machine	less than 2kw

### **Technical Specifications of the 5.2L Medical Automatic X-ray Film Processor**

Type desktop /Console model

1. Size of the processor film: 4"\*4"-14"\*17"
2. Process time: 105/135/165s.
3. Develop time: 25/35/45s
4. Film feed mode: U-slot
5. Film sensing mode: micro switch
6. Develop temperature: Adjustable 28 -37 degree (plus or minus 0.3 )
7. Developing Capacity: 80p/h (14"\*17"); 145p/h (10"\*12")
8. Dryer temperature: 40-65degree.
9. Channel volume: Develop Fixer Water each 5.2litres
10. Water developing control mode: solenoid valve control
11. Anti-oxidation function: 60mins interval
12. Anti-crystallization function: 20mins interval
13. Washing Control :water 2~8L/min when rinse
14. Replenishment: Auto./manual 20~200ml/for 0.5s.q.m





# Intraoral x ray machine high

Professional mobile dental x ray unit, intraoral X ray machine high performance



<b>Place of Origin:</b>	Guangzhou China
<b>Brand Name:</b>	GOLGATHA
<b>Certification:</b>	CE/ISO
<b>Model Number:</b>	GGT – 4004

## Product Description

<b>Tube Voltage</b>	60KVp	<b>Tube Current</b>	8mA
<b>Focus Size</b>	0.8mm	<b>Total Filtration</b>	2.5mmAL
<b>Exposure Time</b>	0.2 To 4 Sec		
<b>High Light:</b>	<b>Hospital x ray machine, portable digital x ray machine</b>		

### Dental Clinic Used X-ray Machine / Mobile Dental X-ray Unit

Classification: Electro medical, Class I, Type B

Power supply: 220V±10%, 50Hz, 1kVA

Tube voltage: 60KVp

Tube current: 8mA

Focus size: 1.5mm

Total filtration: 2.5mmAL

Exposure time: 0.2 to 4 sec

Leak radiation: Outside one meter≤0.002mGy/h

(National standard: 0.25 mGy/h)

Optional: Tube current: 0.5mA;

Focus size: 0.8mm

### Features

The microprocessor-controlled timer brings high-tech X-ray imaging at your fingertips.

The control panel allows on accurate and fast exposure time selection while protecting the head during X-ray examinations.

Fitted with 60kVp 8mA tube with preheating grid. The machine has been specially designed for intraoral dental diagnosis applications.

Compiles with local and international regulations on ionizing radiation protection for maximum safety.

The soft positioner arm ensures naturally smooth and well-balanced movements. It is easy installed at the desired height and length.

Its ergonomics and design have been studied to meet the requirements of the most demanding practices in matters of floor space optimization.



# MRI magnetic resonance imaging

Highly skilled MRI magnetic resonance imaging machine scan system in hospital



<b>Place of Origin:</b>	Guangzhou China
<b>Brand Name:</b>	GOLGATHA
<b>Certification:</b>	CE/ISO
<b>Model Number:</b>	GGT – 4011

## Product Description

<b>Type</b>	X Ray Equipment	<b>Classification</b>	Imaging Diagnostic Equipment
<b>Certification</b>	CE And ISO	<b>Origin</b>	China Guangdong
<b>Transport Package</b>	Wooden Box	<b>Trademark</b>	Golgotha
<b>High Light:</b>	<b>Hospital x ray machine, portable digital x ray machine</b>		

### Medical Magnetic Resonance Imaging MRI

#### Detail information

1. MAMS 02 0.35T MRI System.
2. DICOM camera connection.
3. Vascular imaging sequence.
4. Spin Echo sequence (SE)Focus size: 0.8mm.

#### Imaging system software

- System control software
- System correcting software
- Data processing software
- Imaging reconstruction software.
- Image analyzing software.

- The patients database management software

### **Imaging sequence**

- Spin Echo sequence (SE).
- Fast spin Echo sequence (FSE).
- Gradient echo sequence (GRE).
- Fat suppression sequence.
- Water suppression sequence.
- Vascular imaging sequence.
- Water imaging sequence (MRM, MRCP, and MRU).
- Diffusion weighted imaging sequence.
- ECG gating sequence (option).
- Breath hold scanning sequence

### **Image enhancement software**

- Image enhance processing

### **DICOM software package**

- DICOM camera connection.
- Post-processing workstation connection.
- PACS system connection.
- Remote control connection

